



Simple, powerful print management



A CUSTOMER GUIDE TO SUSTAINABLE PRINTING

# Sustainable printing for the environment, and your bottom line

Boost your business by reducing print waste and transform your printing's impact on our forests.

## Challenge

Making business more sustainable is a critical challenge in today's social and economic reality.

Customers, investors, regulators, and employees all favor more sustainable organizations. If you're looking for a way to start your sustainability journey, or add another piece to your story alongside carbon offsetting, green energy use, and recycling - you can benefit from making your printing Forest Positive.

### So if you have . . .

- ▶ A brand reputation for sustainability to uphold
- ▶ A hard time finding budget-friendly sustainability initiatives
- ▶ A desire to appeal to customers motivated by sustainability
- ▶ Users who perceive your high print volume as a negative environmental impact

**. . . Forest Positive printing with PaperCut Grows can help.**

### Forest Positive printing

Plant more trees than your printing uses. Make your essential business printing a positive force for fighting deforestation and climate change.

### The Forest Positive printing equation

Reduce waste by managing printing with **PaperCut MF or PaperCut Hive + plant more trees than your printing uses = Forest Positive printing.**

**20%**

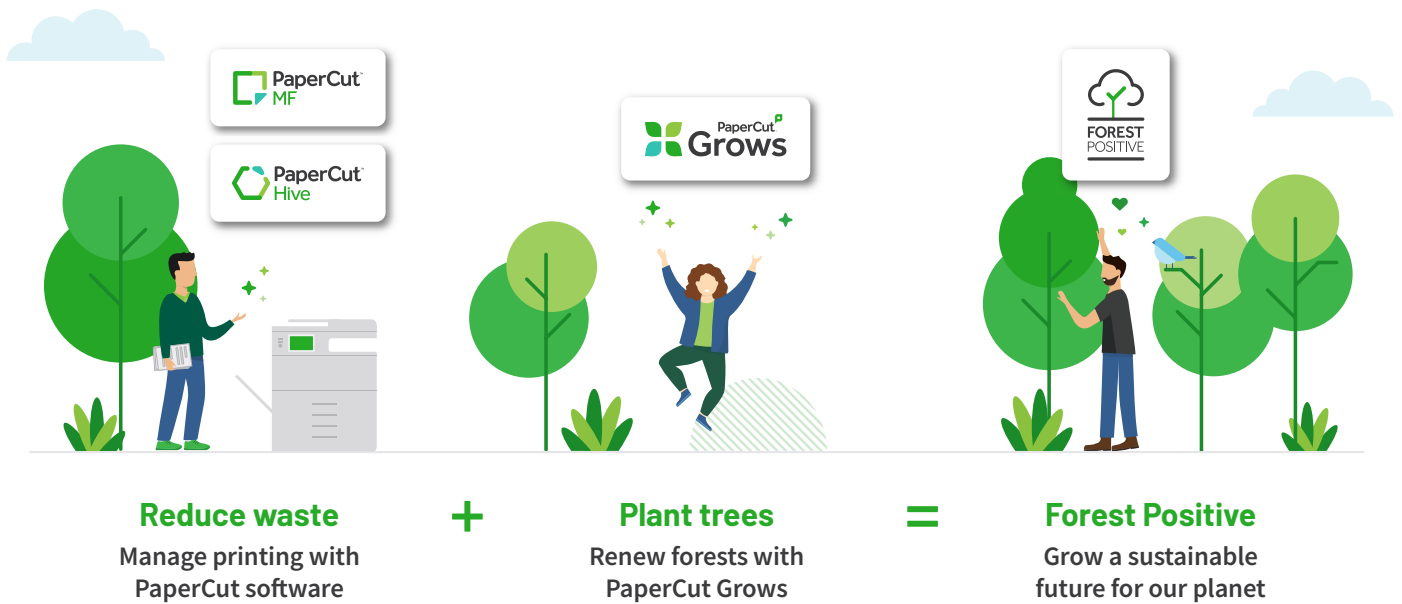
of current greenhouse gases are due to tropical forest destruction.

**30%**

of trees cut down are pulped into paper products.

**48 lbs**

of CO<sub>2</sub> is absorbed by one mature tree per year.



## Solution

Sustainability founded our company, and we've been reducing print waste for more than 20 years. We're now solving the second half of the print equation by delivering Forest Positive printing with our sustainability program PaperCut Grows.

### 1. Reduce waste with PaperCut MF or PaperCut Hive

Our flagship solutions provide workplaces with a suite of waste reduction features, and educate users on thoughtful printing with real-time dashboards. Hold/release queues prevent uncollected and wasted documents via print job authentication. Duplex printing cuts paper use in half via automatic double-sided print jobs. Pop-up print policies prompt users to follow waste reduction practices.

### 2. Plant more trees than you use with PaperCut Grows

Signing up for PaperCut Grows is a simple and inexpensive up-front investment per printer based on your printing fleet's size. The PaperCut Grows dashboard displays real-time print tracking and tree-planting volumes for a transparent view of your Forest Positive printing. We bundle up these calculations and conversions with our print management functionality. We leave the planting to the reforestation experts, our non-profit partner One Tree Planted.

### 3. Forest Positive printing

Forest Positive printing transforms essential document output into direct environmental action. The in-product Marketing Toolkit empowers your business with a poignant sustainability story via customizable website components, social media posts, and other content. Market research shows customers and employees prefer environmentally conscious businesses. Genuine business sustainability attracts capital and debt investment from ESG-minded stakeholders and empowers businesses to stay ahead of regulatory penalties.

## Benefit

4 ways PaperCut Grows is good for your business and good for the planet

### 1. Simple to start, and simple to use

All the print and planting volumes are automated and there's no complex carbon footprint auditing

### 2. Affordable up-front investment per printer

Trees are planted before you print for immediate environmental impact

### 3. Official partnership with non-profit org

All tree planting is handled by the experts, One Tree Planted

### 4. It's real, guilt-free impact

Staff know their Forest Positive printing directly combats climate change

## Contact us to explore benefits and features

sales@papercut.com  
papercut.com

**PaperCut**<sup>®</sup>